

Grundriss Teilobjekt A

Obergeschoss - Büro:

NGF = 103,46 qm

- 01 - 29,83 qm
- 02 - 10,83 qm
- 03 - 3,30 qm
- 04 - 14,88 qm
- 05 - 28,26 qm
- 06 - 16,36 qm

Erdgeschoss - Sozialräume, Büro:

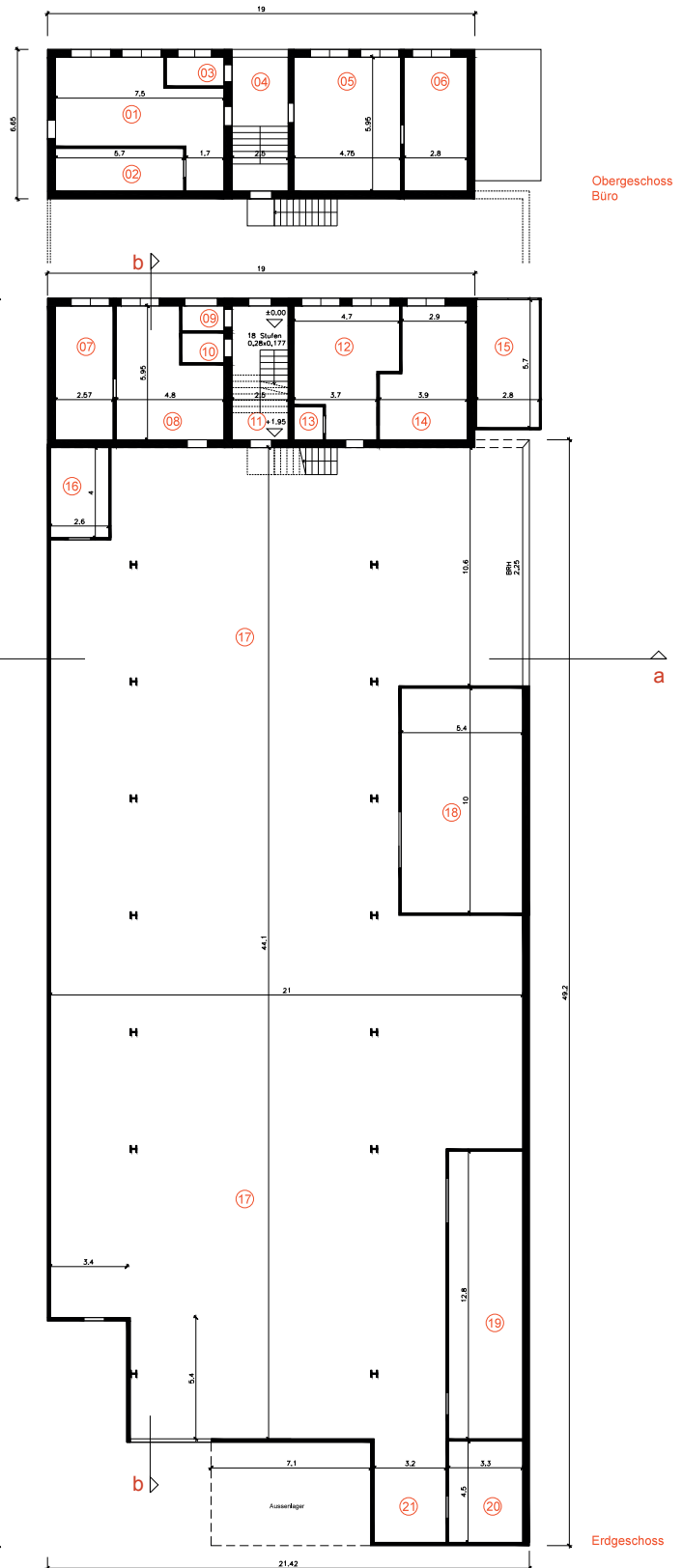
NGF = 96,39 qm

- 07 - 15,30 qm
- 08 - 23,36 qm
- 09 - 2,07 qm
- 10 - 2,49 qm
- 11 - 14,88 qm
- 12 - 22,71 qm
- 13 - 1,91 qm
- 14 - 18,71 qm
- 15 - 15,96 qm

Produktions-Halle A:

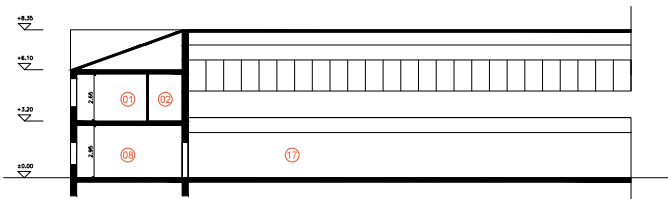
NGF = 932,11 qm

- 16 - 10,40 qm
- 17 - 795,90 qm
- 18 - 54,00 qm
- 19 - 42,24 qm
- 20 - 14,85 qm
- 21 - 14,72 qm

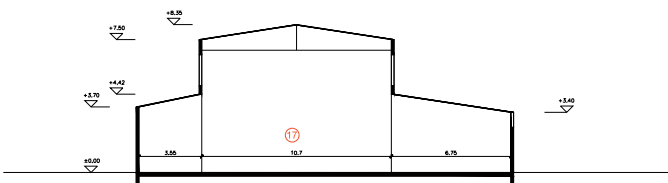


Obergeschoss
Büro

Erdgeschoss



Schnitt b-b



Schnitt a-a